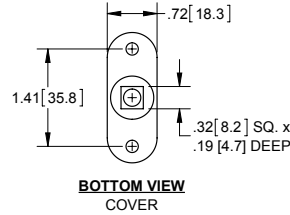
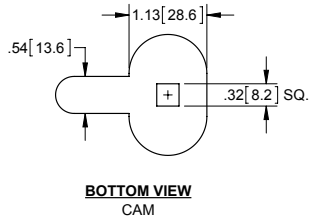
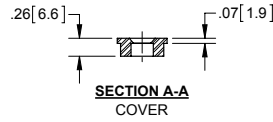
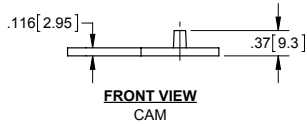
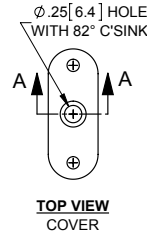
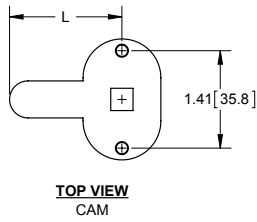


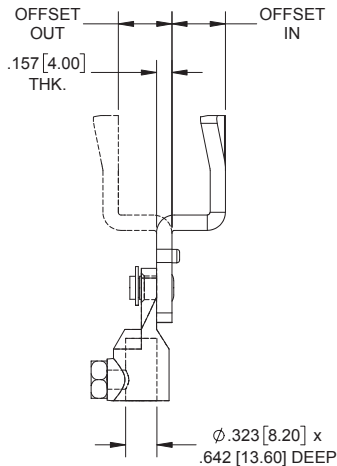
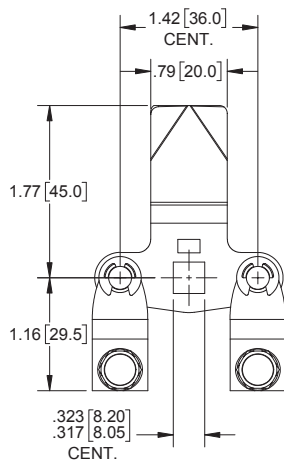
Three Point Cam Kit



Part Number	L
C11	1.625 [41.28]
C12	2.125 [53.98]

- ▶ for .313" sq. shaft
- ▶ die cast zinc with mill finish
- ▶ use with 723 rods (see pg. 67)
- ▶ cam and cover kits are shipped separately in bulk

Three Point Offset Cams



Part Number	Offset
12C61	.63 [16.0] in
12C60	.55 [14.0] in
12C59	.47 [12.0] in
12C58	.39 [10.0] in
12C57	.31 [8.0] in
12C56	.28 [7.0] in
12C55	.24 [6.0] in
12C54	.16 [4.0] in
12C53	.08 [2.0] in
12C52	straight
12C62	.08 [2.0] out
12C63	.16 [4.0] out
12C64	.24 [6.0] out
12C65	.28 [7.0] out
12C66	.31 [8.0] out
12C67	.39 [10.0] out
12C68	.47 [12.0] out
12C69	.55 [14.0] out
12C70	.63 [16.0] out
12C71	.67 [17.0] out
12C72	.71 [18.0] out
12C73	.79 [20.0] out
12C74	.87 [22.0] out

- ▶ steel cam with die cast zinc rod adaptor and e-clips
- ▶ finish: zinc plated
- ▶ new part
- ▶ rod adaptor can be purchased separately, p/n C20