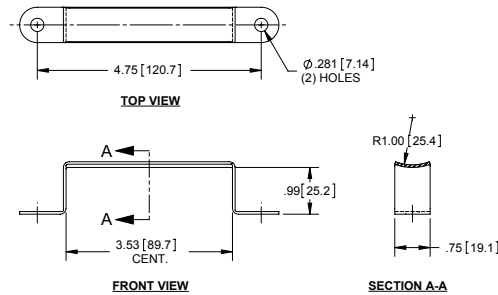
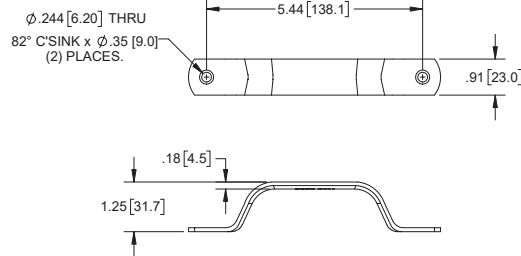


Formed Pulls



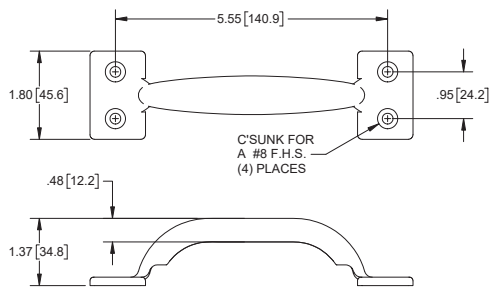
Part Number	Material	Finish
J3126	galvanized steel	mill
J3126SS	304SS	mill

Steel Formed Pull **NEW**



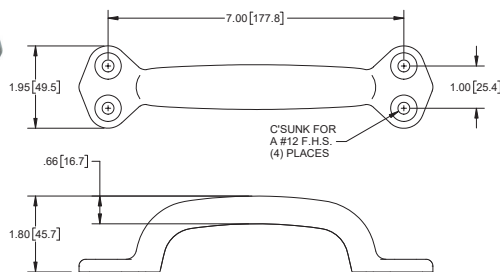
Part Number	Material	Finish
J3129	steel	zinc plated

Formed Pulls



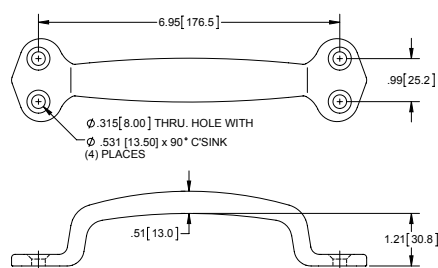
Part Number	Material	Finish	Hole Size
917	steel	zinc plated	Ø .2190 [5.563]
917SS	304SS	electropolished	Ø .2190 [5.563]
928BK	steel	black powder coated	Ø .252 [6.40]

Formed Pulls



Part Number	Material	Finish
983	steel	chrome plated
983SS	304SS	electropolished
983SS-01	304SS	electropolished then hand polished

Die Cast Zinc Pull



Part Number	Material	Finish
983DC	die cast zinc	chrome plated