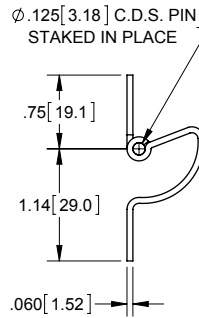
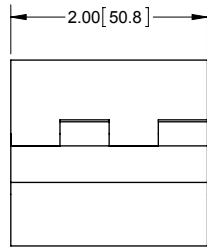
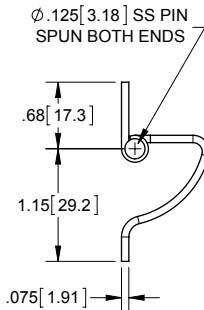
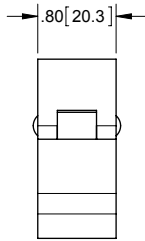


Concealed Hinge with 1.89 [48.0] Open Width



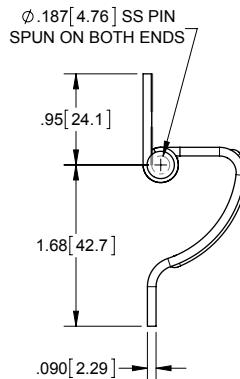
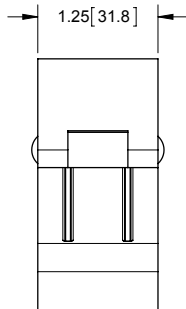
Part Number	Material	Finish
CH61820	steel	mill

Concealed Hinges with 1.83 [46.5] Open Width



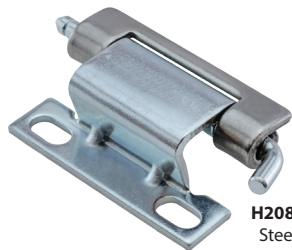
Part Number	Material	Finish
CH71808	steel	tumbled deburred
CH71808A	aluminum	tumbled deburred
CH71808SS	304SS	electropolished

Concealed Hinges with 1.63 [41.4] Open Width

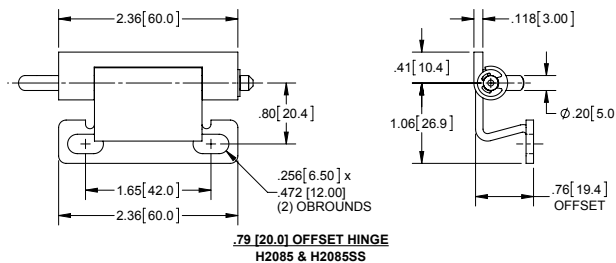


Part Number	Material	Finish
CH92612	steel	mill
CH92612ZN	steel	zinc plated
CH92612A	aluminum	mill
CH92612SS	304SS	electropolished

Concealed Hinges with Removable Pin

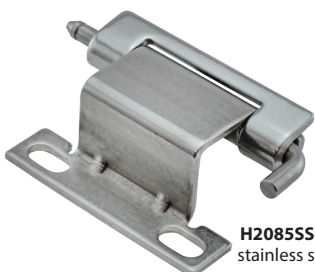


H2085
Steel

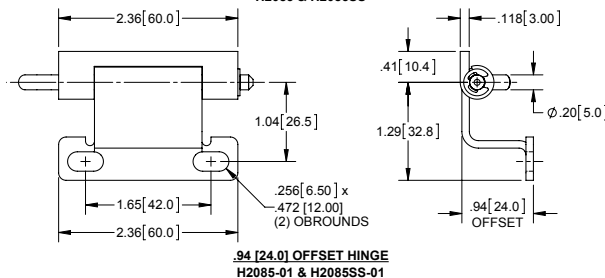


Part Number	Material	Finish
H2085	steel	mill / zinc plated
H2085SS	stainless steel	mill
H2085-01	steel	mill / zinc plated
H2085SS-01	stainless steel	mill

▶ small leaf of steel hinges have a mill finish for welding; all other components are zinc plated



H2085SS-01
stainless steel



.94 [24.0] OFFSET HINGE
H2085-01 & H2085SS-01