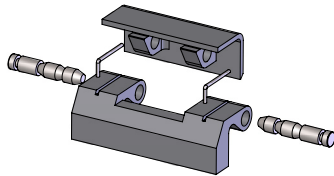


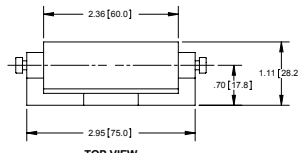
### Cast Take-apart Enclosure Hinge

Part No.	Material	Finish
H2075	die cast zinc	black powder coated

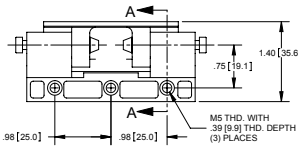
▶ steel, zinc plated pins



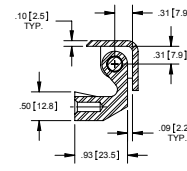
EXPLODED VIEW



TOP VIEW



FRONT VIEW



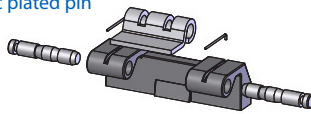
SECTION A-A



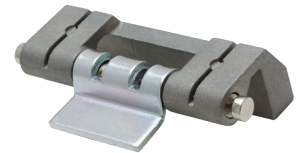
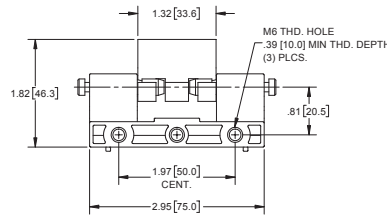
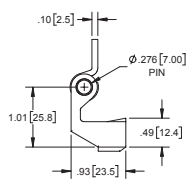
### Take-apart Enclosure Hinge

Part Number	Base		Weld-on Leaf	
	Material	Finish	Material	Finish
H2086	die cast zinc	sand blasted	steel	zinc plated

▶ steel, zinc plated pin



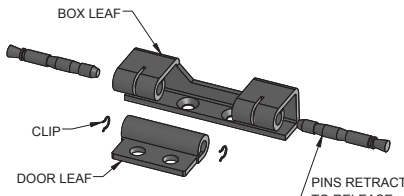
EXPLODED VIEW



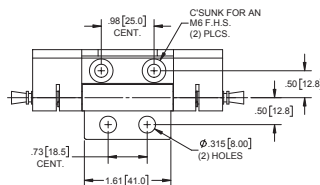
### Enclosure Hinge

Part Number.	Material	Finish
H2267	steel	zinc plated

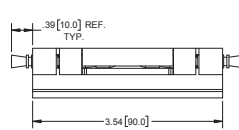
▶ steel clips and pins



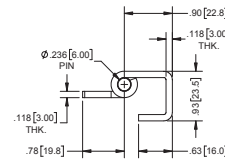
EXPLODED VIEW



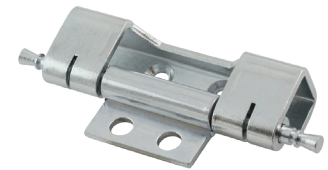
TOP VIEW



FRONT VIEW



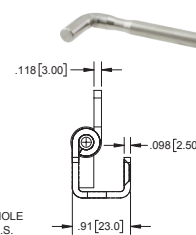
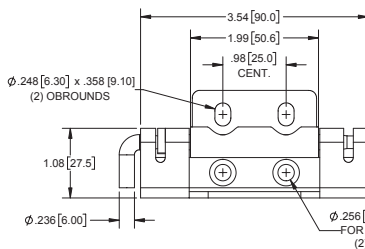
SIDE VIEW



### Heavy Duty Hinges with Quick Release Pin

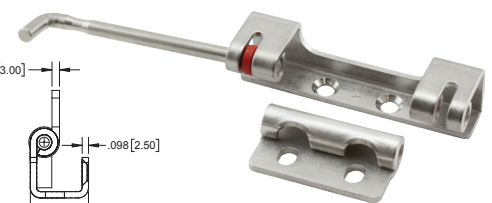
Part Number	Material	Finish
J2188	steel	zinc plated
J2188SS	304SS	passivated

▶ includes: box leaf, lid leaf, pin, capture ring



TOP VIEW

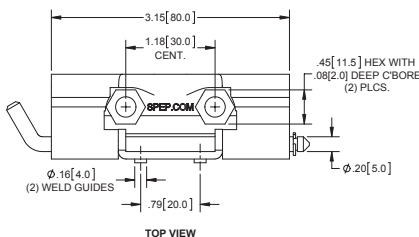
RIGHT SIDE VIEW



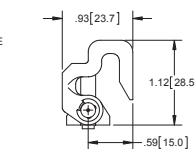
### Enclosure Hinge Kits with Cast Box Leaves

Part Number	Box Leaf Material	Finish
J2130	die cast zinc	clear zinc
J2130SS	304SS	passivated

▶ includes: box leaf, lid leaf, pin, c-clip, (2) 1/4-20 screws, (2) sealing washers, (2) 1/4-20 nylon nuts



TOP VIEW



RIGHT SIDE VIEW

