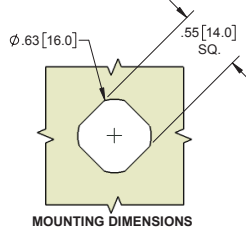
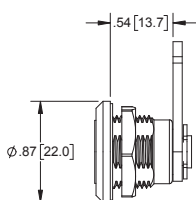
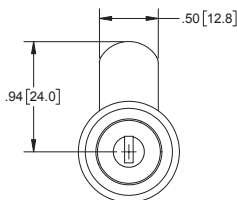


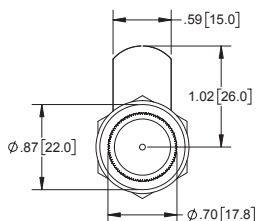
Cam Locks



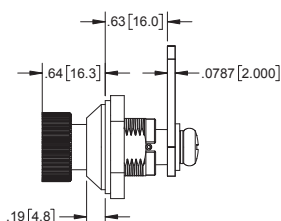
| Part Number | Material | Finish |
|---------------|---------------|----------------------------|
| K201CP | die cast zinc | chrome |
| K201BK | die cast zinc | black textured powder coat |

- ▶ key code 2233
- ▶ includes cam

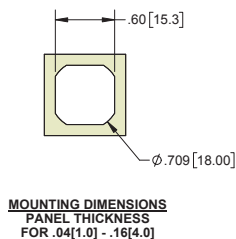
Push and Turn Knob Cam Lock



FRONT VIEW



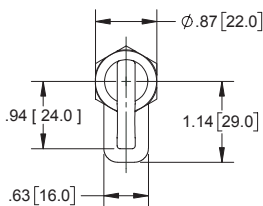
RIGHT SIDE VIEW



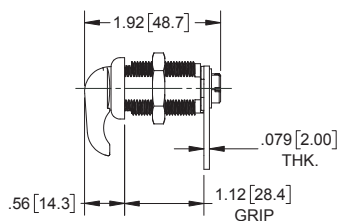
| Part Number | Material | Finish |
|-----------------|---------------|---------------|
| K05ICP50 | die cast zinc | chrome plated |

- ▶ includes cam

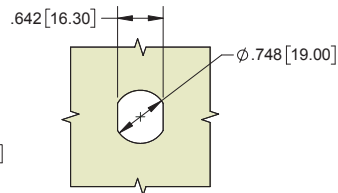
Thumb Turn Cam Lock



FRONT VIEW



RIGHT SIDE VIEW

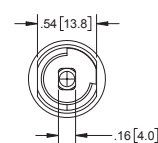
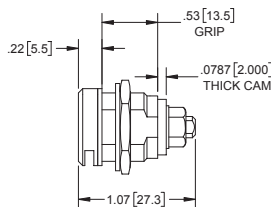
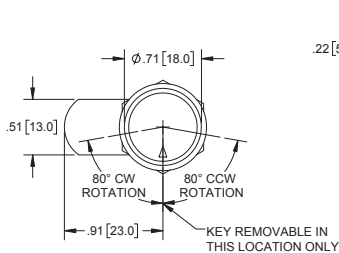


MOUNTING DIMENSIONS
FOR .04 [1.0] - .79 [20.0]
PANEL THICKNESS

| Part Number | Material | Finish |
|-----------------|---------------|---------------|
| K21TNP01 | die cast zinc | nickel plated |

- ▶ includes cam

Cam Lock with Handle Key



| Part Number | Material | Finish |
|-----------------|---------------|---------------|
| K03PCP10 | die cast zinc | chrome plated |

- ▶ handle key material: die cast zinc with nickel plated finish
- ▶ includes cam
- ▶ key removable in locked position only