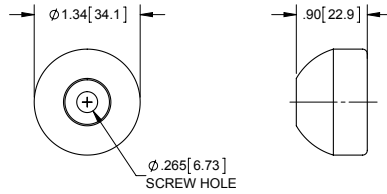


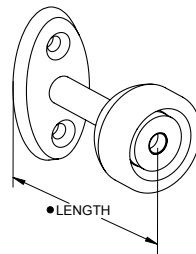
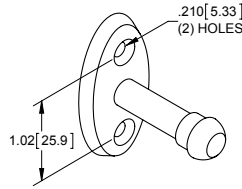
## Female Door Sockets



Part Number	Description	Finish
600	nylon socket insert	white
600BK	nylon socket insert	black

- ▶ adjustable socket increases holding capacity by tightening mounting screw
- ▶ screw not included

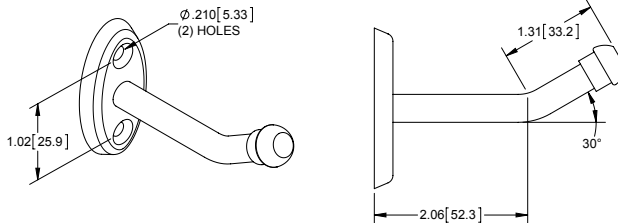
## Male Door Holders



Part Number	Description	Finish
604ZN	1.5 [38.1] steel	zinc plated
604SS	1.5 [38.1] 304SS	polished
605ZN	2.5 [63.5] steel	zinc plated
605SS	2.5 [63.5] 304SS	polished
606ZN	3.5 [88.9] steel	zinc plated
606SS	3.5 [88.9] 304SS	polished
607ZN	4.5 [114.3] steel	zinc plated
607SS	4.5 [114.3] 304SS	polished

- ▶ male holder and female socket sold separately
- length determined in assembled state

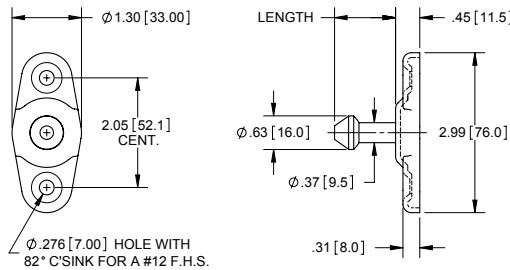
## Male Door Holders with 30° Offset



Part Number	Description	Finish
611SS	3.5 [88.9] 304SS with 30° offset	polished

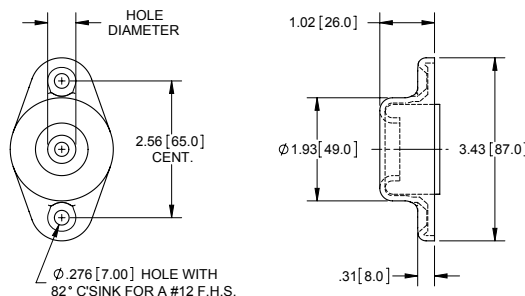
- length determined in assembled state

## Plunger & Socket Door Holder



### Male Door Holder Plungers

Part No.	Description	Length	Finish
613ZN	1-5/8" steel	1.14 [29.0]	zinc plated
614ZN	2-1/8" steel	1.65 [41.9]	zinc plated
615ZN	2-5/8" steel	2.24 [56.9]	zinc plated
616ZN	3-1/8" steel	2.72 [69.1]	zinc plated



### Female Door Holder Socket

Part No.	Description	Length	Finish
619	tight fit socket	.528 [13.41]	zinc plated