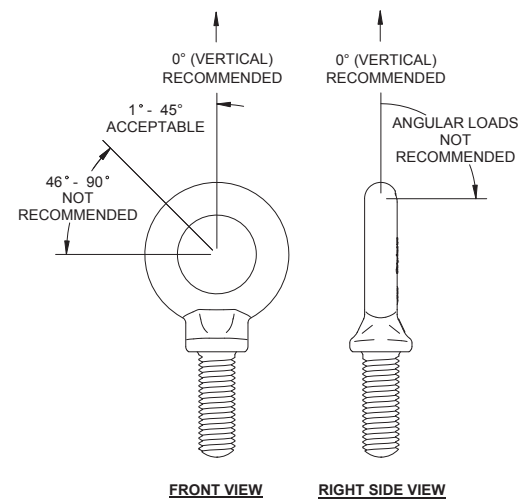
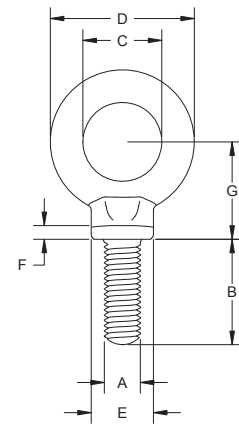


Shoulder Pattern Eyebolts

Part Number	Material	Rated Capacity	A (Thread Size)	B	C	D	E	F	G
E203	steel	500 lbs.							
E203ZN	steel	500 lbs.	1/4"- 20	1.00	Ø.75	Ø1.19	Ø.53	.15	.69
E203SS	304SS	460 lbs.		[25.4]	[19.1]	[30.2]	[13.5]	[3.8]	[17.5]
E203SST	316SS	460 lbs.							
E206	steel	900 lbs.	5/16"- 18						
E206ZN	steel	900 lbs.		1.12	Ø.87	Ø1.44	Ø.59	.15	.87
E206SS	304SS	780 lbs.		[28.5]	[22.1]	[36.6]	[15.0]	[3.8]	[22.1]
E206SST	316SS	780 lbs.							
E209	steel	1300 lbs.	3/8"- 16						
E209ZN	steel	1300 lbs.		1.25	Ø1.00	Ø1.69	Ø.65	.15	1.06
E209SS	304SS	1160 lbs.		[31.8]	[25.4]	[42.9]	[16.5]	[3.8]	[26.9]
E209SST	316SS	1160 lbs.							
E212	steel	1800 lbs.	7/16"- 14	1.37	Ø1.06	Ø1.81	Ø.78	.22	1.19
E212ZN	steel	1800 lbs.		[34.8]	[26.9]	[46.0]	[19.8]	[5.6]	[30.2]
E215	steel	2400 lbs.	1/2"- 13						
E215ZN	steel	2400 lbs.		1.50	Ø1.19	Ø2.12	Ø.90	.22	1.31
E215SS	304SS	2150 lbs.		[38.1]	[30.2]	[53.9]	[22.9]	[5.6]	[33.3]
E215SST	316SS	2150 lbs.							
E218	steel	3200 lbs.	9/16"- 12	1.75	Ø1.37	Ø2.56	Ø1.03	.25	1.59
E218ZN	steel	3200 lbs.		[44.5]	[34.8]	[65.0]	[26.2]	[6.4]	[40.4]
E221	steel	4000 lbs.	5/8"- 11						
E221ZN	steel	4000 lbs.		1.75	Ø1.37	Ø2.56	Ø1.03	.25	1.59
E221SS	304SS	3440 lbs.		[44.5]	[34.8]	[65.0]	[26.2]	[6.4]	[40.4]
E221SST	316SS	3440 lbs.							
E224	steel	5000 lbs.	3/4"- 10						
E224ZN	steel	5000 lbs.		2.00	Ø1.50	Ø2.81	Ø1.19	.25	1.72
E224SS	304SS	5140 lbs.		[50.8]	[38.1]	[71.4]	[30.2]	[6.4]	[43.69]
E224SST	316SS	5140 lbs.							
E227	steel	7000 lbs.	7/8"- 9	2.25	Ø1.62	Ø3.19	Ø1.37	.31	2.03
E227ZN	steel	7000 lbs.		[57.2]	[41.2]	[81.0]	[34.8]	[7.9]	[51.6]
E230	steel	9000 lbs.	1"- 8						
E230ZN	steel	9000 lbs.		2.50	Ø1.75	Ø3.56	Ø1.56	.37	2.22
E230SS	304SS	9370 lbs.		[63.5]	[44.5]	[90.4]	[39.6]	[7.9]	[56.4]
E230SST	316SS	9370 lbs.							
E233	steel	12000 lbs.	1 1/8"- 7	2.75	Ø2.00	Ø4.06	Ø1.75	.44	2.59
				[69.9]	[50.8]	[103.1]	[44.5]	[11.2]	[65.8]
E236	steel	15000 lbs.	1 1/4"- 7	3.00	Ø2.19	Ø4.44	Ø1.94	.50	2.84
				[76.2]	[55.6]	[112.8]	[49.3]	[12.7]	[72.1]
E239	steel	21000 lbs.	1 1/2"- 6	3.50	Ø2.50	Ø5.19	Ø2.19	.50	3.19
				[88.9]	[63.5]	[131.8]	[55.6]	[12.7]	[81.0]
E242	steel	28000 lbs.	1 3/4"- 5	3.75	Ø2.75	Ø6.00	Ø2.50	.62	3.75
				[95.3]	[69.9]	[152.4]	[63.5]	[15.8]	[95.3]
E245	steel	38000 lbs.	2"- 5	4.00	Ø3.00	Ø6.75	Ø2.87	.75	4.25
				[101.6]	[76.2]	[171.5]	[72.9]	[19.1]	[108.0]

- ▶ stainless steel parts are 304SS passivated and electro-polished
- ▶ 316SS parts available upon request
- ▶ steel parts are forged and 304 / 316SS parts are from investment casting
- ▶ all standard eyebolts threaded national coarse
- ▶ shanks longer than standard are available upon request



Capacities listed are for vertical lifting only. Rated capacity is substantially reduced when loading at any angle. Loading must never be made at an angle greater than 45° from bolt center line. At an angle of 45°, rated capacity is reduced to 1/4 of shown rating.