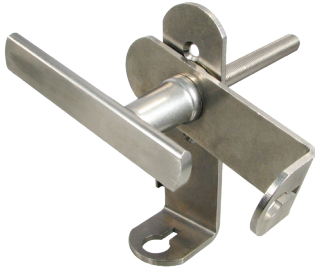


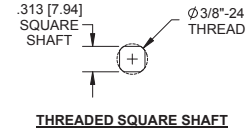
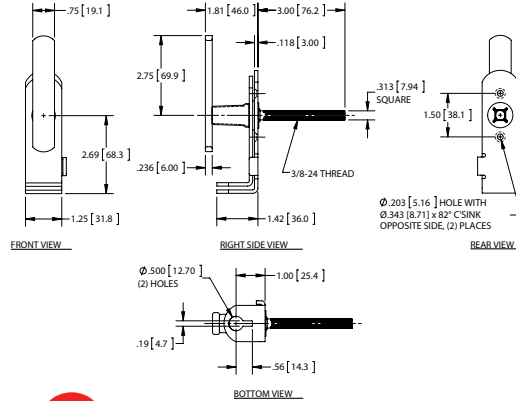
### Stamped Padlocking T-Handles



CCW rotation shown

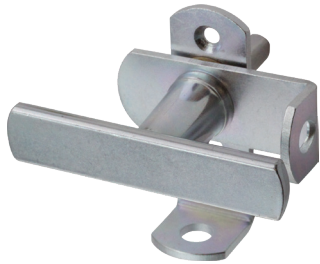
Part No.	Rotation	Material	Finish	Shaft Length	Shaft Style	Shaft Size	Mounting
301ZN	CW	steel	zinc plated	3.00 [76.2]	3/8" - 24 thread	.313 [7.94]	front
301ZN50	CCW						
301SS	CW	304SS	electropolished	3.00 [76.2]	3/8" - 24 thread	.313 [7.94]	front
301SS50	CCW						

- ▶ threaded shaft has a 3/8-24 thread
- ▶ gasket available separately, part no. 301G
- ▶ keyhole allows you to use a standard padlock or dual lock bracket, enabling the use of 2 padlocks with different key codes. See part no. X125 & X125-01 on pg. 32

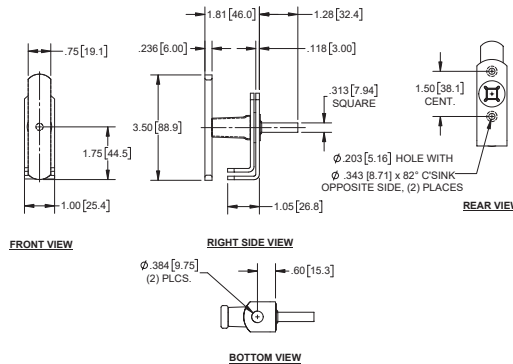


### Stamped Padlocking T-Handle

NEW



Part Number	Rotation	Material	Finish	Shaft Length	Shaft Style	Shaft Size	Mounting
301ZN502	360°	steel	zinc plated	1.28 [32.4]	non-threaded	.3125 [7.938] SQ.	front



### Blind Mount L-Handles



Part Number	Mount	Rotation	Shaft Style	Shaft Length	Locking	Finish	Key Code
3101	blind	90° CW	3/8" - 24 thread	3.50 [88.9]	yes	chrome	CAT60
3102		90° CC				brushed	
3103		90° CW					
3104		90° CC					
3121	blind	90° CW	3/8" - 24 thread	3.50 [88.9]	no	chrome	non-locking
3122		90° CC				brushed	
3123		90° CW					
3124		90° CC					

- ▶ material: die cast zinc
- ▶ .313 [7.94] sq. shaft
- ▶ dust shutter & (2) keys
- ▶ each handle includes: (2) mounting screws, (1) nut, (1) lock washer
- ▶ gasket available separately, part no. 312G

